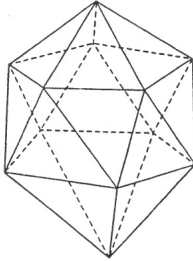


PAPER-II (CSAT)

1. Consider the following three-dimensional figure :



How many triangles does the above figure have?

- (a) 18 (b) 20
(c) 22 (d) 24
2. Consider the following sum:
 $\bullet + 1 \bullet + 2 \bullet + \bullet + 3 + \bullet = 21 \bullet$
 In the above sum, \bullet stands for
- a) 4 b) 5
c) 6 d) 8

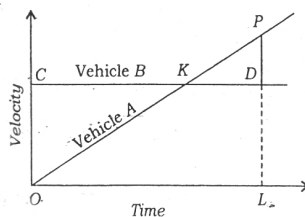
3. Consider the following pattern of numbers :

8 10 15 13
 6 5 7 4
 4 6 8 8
 6 11 16 ?

What is the number at? in the above pattern?

- a) 17 b) 19
c) 21 d) 23
4. How many diagonals can be drawn by joining the vertices of an octagon?
- a) 20 b) 24
c) 28 d) 64

5. The figure drawn below gives the velocity graphs of two vehicles A and B. The straight line OKP represents the velocity of vehicle A at any instant, whereas the horizontal straight line CKD represents the velocity of vehicle B at any instant. In the figure, D is the point where perpendicular from P meets the horizontal line CKD such that $PD = \frac{1}{2} LD$:



What is the ratio between the distances covered by vehicles A and B in the time interval OL?

- a) 1 : 2 b) 2 : 3
c) 3 : 4 d) 1 : 1

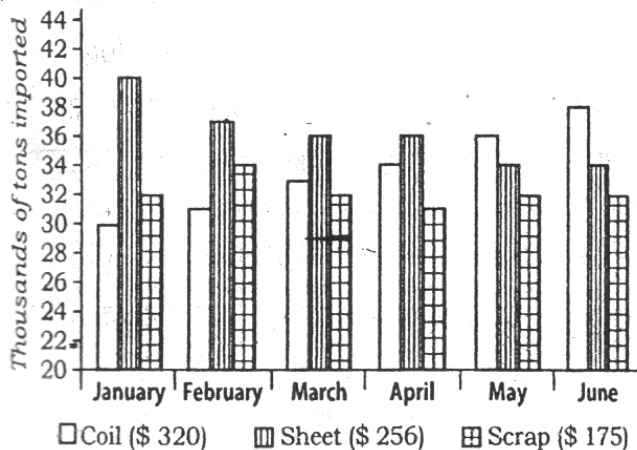
PASSAGE-4

Though I have discarded much of past tradition and custom, and am anxious that India should rid herself of all shackles that bind and contain her and divide her people, and suppress vast numbers of them, and prevent the free development of the body and the spirit; though I seek all this, yet I do not wish to cut myself off from that past completely. I am proud of that great inheritance that has been and is, ours and I am conscious that I too, like all of us, am a link in that unbroken chain which goes back to the dawn of history in the immemorial past of India.

10. The author wants India to rid herself of certain past bonds because
- he is not able to see the relevance of the past
 - there is not much to be proud of
 - he is not interested in the history of India
 - they obstruct her physical and spiritual growth

Directions for the following 3 (three) items:

The following three items are based on the graph given below which shows imports of three different types of steel over a period of six months of a year. Study the graph and answer the three items that follow.

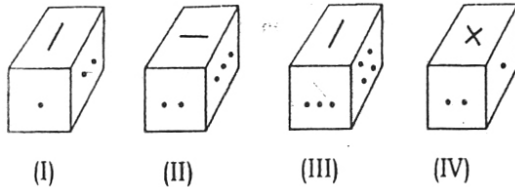


The figures in the brackets indicate the average cost per ton over six months period.

11. By how much (measured in thousands of tons) did the import of sheet steel exceed the import of coil steel in the first three months of the year?
- 11
 - 15
 - 19
 - 23
12. What was the approximate total value (in \$) of sheet steel imported over the six months period?
- 45,555
 - 50,555
 - 55,550
 - 65,750
13. What was the approximate ratio of sheet steel and scrap steel imports in the first three months of the year?
- 1 : 1
 - 1.2 : 1
 - 1.4 : 1
 - 1.6 : 1

Directions for the following 3 (three) items

Rotated positions of a single solid are shown below. The various faces of the solid are marked with different symbols like dots, cross and line. Answer the three items that follow the given figures



14. What is the symbol on the face opposite to that containing a single dot?

a) Four dots	b) Three dots
c) Two dots	d) Cross

15. What is the symbol on the face opposite to that containing two dots?

a) Single dot	b) Three dots
c) Four dots	d) Line

16. What is the symbol on the face opposite to that containing the cross?

a) Single dot	b) Two dots
c) Line	d) Four dots

Directions for the following 4 (four) items:

Read the following passage and answer the four items that follow. Your answers to these items should be based on the passage only.

PASSAGE

It is no longer enough for us to talk about providing for universal access to education. Making available schooling facilities is an essential prerequisite, but is insufficient to ensure that all children attend school and participate in the learning process. The school may be there, but children may not attend or they may drop out after a few months. Through school and social mapping, we must address the entire gamut of social, economic, cultural and indeed linguistic and pedagogic issues, factors that prevent children from weaker sections and disadvantaged groups, as also girls, from regularly attending and complementing elementary education. The focus must be on the poorest and most vulnerable since these groups are the most disempowered and at the greatest risk of violation or denial of their right to education.

The right to education goes beyond free and compulsory education to include quality education for all. Quality is an integral part of the right to education. If the education process lacks quality, children are being denied their right. The Right of Children to Free and Compulsory Education Act lays down that the curriculum should provide for learning through activities, exploration and discovery. This places an obligation on us to change our perception of children as passive receivers of knowledge, and to move beyond the convention of using textbooks as the basis of examinations. The teaching-learning process must become stress-free; and a massive programme for curricular reform should be initiated to provide for a child-friendly learning system that is more relevant and empowering. Teacher accountability systems and processes must ensure that children are learning, and that their right to learn in a child-friendly environment is not violated. Testing and assessment systems must be reexamined and redesigned to ensure that these do not force children to struggle between school and tuition centres, and bypass childhood.

28. Which of the following is/are the correct inference/ inferences that can be made from the passage?
1. Deforestation can cause changes in the course of rivers.
 2. Salinization of land takes place due to human activities only.
 3. Intense monoculture practice in plains is a major reason for desertification in Tropical Asia, Africa and South America.

Select the correct answer using the code given below.

- a) 1 only
 - b) 1 and 2 only
 - c) 2 and 3 only
 - d) None of the above is a correct inference
29. With reference to 'desertification', as described in the passage, the following assumptions have been made :
1. Desertification is a phenomenon in tropical areas only.
 2. Deforestation invariably leads to floods and desertification.

Which of the above assumptions is/are valid?

- a) 1 only
- b) 2 only
- c) Both 1 and 2
- d) Neither 1 nor 2

PASSAGE-2

A diversity of natural assets will be needed to cope with climate change and ensure productive agriculture, forestry, and fisheries. For example, crop varieties are needed that perform well under drought, heat, and enhanced CO₂. But the private-sector and farmer-led process of choosing crops favours homogeneity adapted to past or current conditions, not varieties capable of producing consistently high yields in warmer, wetter, or drier conditions. Accelerated breeding programmes are needed to conserve a wider pool of genetic resources of existing crops, breeds, and their wild relatives. Relatively intact ecosystems, such as forested catchments, mangroves, wetlands, can buffer the impacts of climate change. Under a changing climate, these ecosystems are themselves at risk, and management approaches will need to be more proactive and adaptive. Connections between natural areas, such as migration corridors, may be needed to facilitate species movements to keep up with the change in climate.

30. With reference to the above passage, which of the following would assist us in coping with the climate change?
1. Conservation of natural water sources
 2. Conservation of wider gene pool
 3. Existing crop management practices
 4. Migration corridors

Select the correct answer using the code given below.

- a) 1, 2 and 3 only
 - b) 1, 2 and 4 only
 - c) 3 and 4 only
 - d) 1, 2, 3 and 4
31. With reference to the above passage, the following assumptions have been made :
1. Diversification of livelihoods acts as a coping strategy for climate change.
 2. Adoption of monocropping practice leads to the extinction of plant varieties and their wild relatives.

Which of the above assumptions is/are valid?

- a) 1 only
- b) 2 only
- c) Both 1 and 2
- d) Neither 1 nor 2

PASSAGE-3

Today, the top environmental challenge is a combination of people and their aspirations. If the aspirations are more like the frugal ones we had after the Second World War, a lot more is possible than if we view the planet as a giant shopping mall. We need to get beyond the fascination with glitter and understand that the planet works as a biological system.

32. Which of the following is the most crucial and logical inference that can be made from the above passage?
- a) The Earth can meet only the basic needs of humans for food, clothing and shelter.
 - b) The only way to meet environmental challenge is to limit human population.
 - c) Reducing our consumerism is very much in our own interest.
 - d) Knowledge of biological systems can only help us save this planet.

PASSAGE-4

Some people believe that leadership is a quality which you have at birth or not at all. This theory is false, for the art of leadership can be acquired and can indeed be taught. This discovery is made in time of war and the results achieved can surprise even the instructors. Faced with the alternatives of going left or right, every soldier soon grasps that a prompt decision either way is better than an endless discussion. A firm choice of direction has an even chance of being right while to do nothing will be almost certainly wrong.

33. The author of the passage holds the view that
- a) leadership can be taught through war experience only
 - b) leadership can be acquired as well as taught
 - c) the results of training show that more people acquire leadership than are expected
 - d) despite rigorous instruction, very few leaders are produced
34. A number consists of three digits of which the middle one is zero and their sum is 4. If the number formed by interchanging the first and last digits is greater than the number itself by 198, then the difference between the first and last digits is
- a) 1
 - b) 2
 - c) 3
 - d) 4
35. A solid cube of 3 cm side, painted on all its faces, is cut up into small cubes of 1 cm side. How many of the small cubes will have exactly two painted faces?
- a) 12
 - b) 8
 - c) 6
 - d) 4
36. While writing all the numbers from 700 to 1000, how many numbers occur in which the digit at hundred's place is greater than the digit at ten's place, and the digit at ten's place is greater than the digit at unit's place?
- a) 61
 - b) 64
 - c) 85
 - d) 91
37. If $\text{Pen} < \text{Pencil}$, $\text{Pencil} < \text{Book}$ and $\text{Book} > \text{Cap}$, then which one of the following is always true?
- a) $\text{Pen} > \text{Cap}$
 - b) $\text{Pen} < \text{Book}$
 - c) $\text{Pencil} = \text{Cap}$
 - d) $\text{Pencil} > \text{Cap}$

44. Science college is located in
a) city Q
b) city S
c) city R
d) city P
45. C is studying in
a) Science college
b) Rajasthan
c) Gujarat
d) city Q
46. Which one of the following statements is correct?
a) D is not studying in city S.
b) A is studying in Science college.
c) A is studying in Kerala.
d) Engineering college is located in Gujarat.
47. Which one of the following statements is correct regarding Engineering college?
a) C is studying there.
b) B is studying there.
c) It is located in Gujarat.
d) D is studying there.
48. Which one of the following statements is correct?
a) Engineering college is located in Assam.
b) City Q is situated in Assam
c) C is studying in Kerala.
d) B is studying in Gujarat.

Directions for the following 8 (eight) items

Read the following eight passages and answer the items that follow. Your answers to these items should be based on the passages only.

PASSAGE-1

All actions to address climate change ultimately involve costs. Funding is vital in order for countries like India to design and implement adaptation and mitigation plans and projects. The problem is more severe for developing countries like India, which would be one of the hardest hit by climate change, given its need to finance development. Most countries do indeed treat climate change as real threat and are striving to address it in a more comprehensive and integrated manner with the limited resources at their disposal.

49. With reference to the above passage, the following assumptions have been made :
1. Climate change is not a challenge for developed countries.
 2. Climate change is a complex policy issue and also a development issue for many countries.
 3. Ways and means of finance must be found to enable developing countries to enhance their adaptive capacity.
- Which of the above assumptions is/are valid?
- a) 1 and 2 only
b) 3 only
c) 2 and 3 only
d) 1, 2 and 3

PASSAGE-2

Cooking with biomass and coal in India is now recognized to cause major health problems, with women and children in poor populations facing the greatest risk. There are more than 10 lakh premature deaths each year from household air pollution due to polluting cooking fuels with another 1.5 lakh due to their contribution to general outdoor air pollution in the country. Although the fraction of the Indian population using clean cooking fuels, such as LPG, natural gas and electricity, is slowly rising, the number using polluting solid fuels as their primary cooking fuel has remained static for nearly 30 years at about 70 crore.

50. Which of the following is the most crucial and logical inference that can be made from the above passage?
- Rural people are giving up the use of polluting solid fuels due to their increasing awareness of health hazards.
 - Subsidizing the use of clean cooking fuels will solve the problem of India's indoor air pollution.
 - India should increase its import of natural gas and produce more electricity.
 - Access to cooking gas can reduce premature deaths in poor households.

PASSAGE-3

Scientific knowledge has its dangers, but so has every great thing. Over and beyond the dangers with which it threatens the present, it opens up as nothing else can, the vision of a possible happy world; a world without poverty, without war, with little illness. Science, whatever unpleasant consequences it may have by the way, is in its very nature a liberator.

51. Which one of the following is the most important implication of the passage?
- A happy world is a dream of science.
 - Science only can build a happy world, but it is also the only major threat.
 - A happy world is not possible without science.
 - A happy world is not at all possible with or without science.

PASSAGE-4

The Arctic's vast reserves of fossil fuel, fish and minerals are now accessible for a longer period in a year. But unlike Antarctica, which is protected from exploitation by the Antarctic Treaty framed during the Cold War and is not subject to territorial claims by any country, there is no legal regime protecting the Arctic from industrialization, especially at a time when the world craves for more and more resources. The distinct possibility of ice-free summer has prompted countries with Arctic coastline to scramble for great chunks of the melting ocean.

52. Which one of the following is the most important implication of the passage?
- India can have territorial claims in the Arctic territory and free access to its resources.
 - Melting of summer ice in the Arctic leads to changes in the geopolitics.
 - The Arctic region will solve the world's future problem of resource crunch.
 - The Arctic region has more resources than Antarctica.

PASSAGE-5

Being a member of the WTO, India is bound by the agreements that have been signed and ratified by its members, including itself. According to Article 6 of the Agriculture Agreement, providing minimum support prices for agricultural products is considered distorting and is subject to limits. The subsidy arising from

'minimal supports' cannot exceed 10 per cent of the value of agricultural production for developing countries. PDS in India entails minimum support prices and public stockholding of food grains. It is possible that, in some years, the subsidy to producers will exceed 10 per cent of the value of agricultural production.

53. What is the crucial message conveyed by the above passage?
- India should revise its PDS.
 - India should not be a member of WTO.
 - For India, food security collides with trade.
 - India provides food security to its poor.

PASSAGE-6

India's educational system is modelled on the mass education system that developed in the 19th century in Europe and later spread around the world. The goal of the system is to condition children as 'good' citizens and productive workers. This suited the industrial age that needed the constant supply of a compliant workforce with a narrow set of capabilities. Our educational institutes resemble factories with bells, uniforms and batch-processing of learners, designed to get learners to conform. But, from an economic point of view, the environment today is very different. It is a complex, volatile and globally interconnected world.

54. With reference to the above passage, the following assumptions have been made:
- India continues to be a developing country essentially due to its faulty education system.
 - Today's learners need to acquire new-age skill-sets.
 - A good number of Indians go to some developed countries for education because the educational systems there are a perfect reflection of the societies in which they function.

Which of the above assumptions is/are valid?

- 1 and 3 only
- 2 only
- 2 and 3 only
- 1, 2 and 3

PASSAGE-7

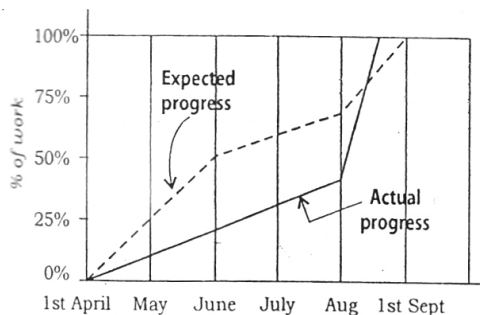
The practice of dieting has become an epidemic; everyone is looking out for a way to attain that perfect body. We are all different with respect to our ethnicity, genetics, family history, gender, age, physical and mental and spiritual health status, lifestyles and preferences. Thereby we also differ in what foods we tolerate or are sensitive to. So we really cannot reduce so many complexities into one diet or diet book. This explains the failure of diets across the world in curbing obesity. Unless the reasons for weight gain are well understood and addressed and unless habits are changed permanently, no diet is likely to succeed.

55. What is the most logical and rational inference that can be made from the above passage?
- Obesity has become an epidemic all over the world.
 - A lot of people are obsessed with attaining a perfect body.
 - Obesity is essentially an incurable disease.
 - There is no perfect diet or one solution for obesity.

PASSAGE-8

Monoculture carries great risks. A single disease or pest can wipe out swathes of the world's food production, an alarming prospect given that its growing and wealthier population will eat 70% more by 2050. The risks are magnified by the changing climate. As the planet warms and monsoon rains intensify, farmlands in Asia will flood. North America will suffer more intense droughts, and crop diseases will spread to new latitudes.

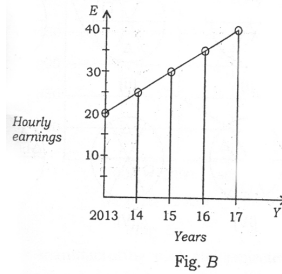
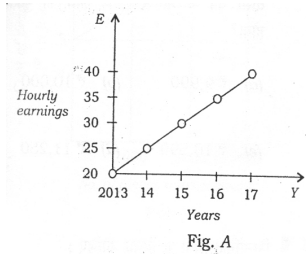
56. Which of the following is the most logical, rational and crucial message given by the passage?
- Preserving crop genetic diversity is an insurance against the effects of climate change.
 - Despite great risks, monoculture is the only way to ensure food security in the world.
 - More and more genetically modified crops only can save the world from impending shortages of food.
 - Asia and North America will be worst sufferers from climate change and the consequent shortage of food.
57. A shopkeeper sells an article at Rs. 40 and gets X% profit. However, when he sells it at Rs. 20, he faces same percentage of loss. What is the original cost of the article?
- Rs. 10
 - Rs. 20
 - Rs. 30
 - Rs. 40
58. There are 24 equally spaced points lying on the circumference of a circle. What is the maximum number of equilateral triangles that can be drawn by taking sets of three points as the vertices?
- 4
 - 6
 - 8
 - 12
59. Consider the sequence given below:
4/12/95, 1/1/96, 29/1/96, 26/2/96,
What is the next term of the series?
- 24/3/96
 - 25/3/96
 - 26/3/96
 - 27/3/96
60. Twelve equal squares are placed to fit in a rectangle of diagonal 5 cm. There are three rows containing four squares each. No gaps are left between adjacent squares. What is the area of each square?
- 5/7 sq cm
 - 7/5 sq cm
 - 1 sq cm
 - 25/12 sq cm
61. Consider the following graph :



Which one of the following statements is not correct with reference to the graph given above?

- On 1st June, the actual progress of work was less than expected.
- The actual rate of progress of work was the greatest during the month of August.
- The work was actually completed before the expected time.
- During the period from 1st April to 1st September, at no time was the actual progress more than the expected progress.

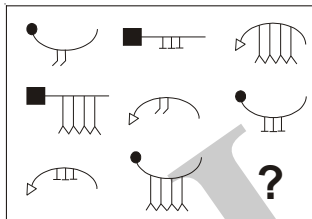
65. Average hourly earnings per year (E) of the workers in a firm are represented in figures A and B as follows:



From the figure, it is observed that the

- a) values of E are different
- b) ranges (i.e., the difference between the maximum and the minimum) of E are different
- c) slopes of the graphs are same
- d) rates of increase of E are different

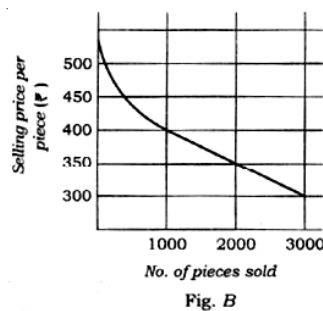
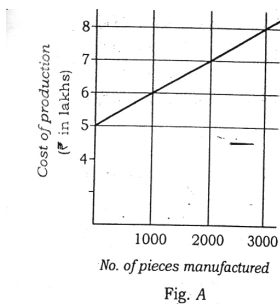
66. Consider the figures given below:



To fit the question mark, the correct answer is

- a)
- b)
- c)
- d)

67. Consider the following figures A and B :



The manufacturing cost and projected sales for a product are shown in the above figures A and B respectively. What is the minimum number of pieces that should be manufactured to avoid a loss?

- (a) 2000
- (b) 2500
- (c) 3000
- (d) 3500

1. Over the last two and a half decades, the dependency ratio for country B has decreased.
2. By the end of next two and a half decades, the dependency ratio of country A will be much less than that of country B.
3. In the next two decades, the work-force relative to its total population will increase in country B as compared to country A.

Select the correct answer using the code given below.

- | | |
|-----------------|-----------------|
| a) 1 and 2 only | b) 2 and 3 only |
| c) 1 and 3 only | d) 1, 2 and 3 |

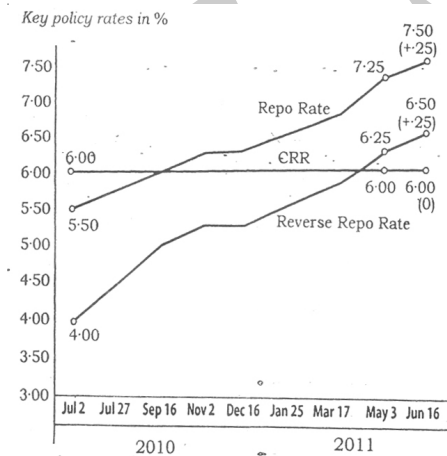
72. Lakshmi, her brother, her daughter and her son are badminton players. A game of doubles is about to begin:

- i) Lakshmi's brother is directly across the net from her daughter.
- ii) Her son is diagonally across the net from the worst player's sibling.
- iii) The best player and the worst player are on the same side of the net.

Who is the best player?

- | | |
|----------------|-----------------|
| a) Her brother | b) Her daughter |
| c) Her son | d) Lakshmi |

73. The graph given below indicates the changes in key policy rates made by the Central Bank several times in a year:



Which one of the following can be the most likely reason for the Central Bank for such an action?

- a) Encouraging foreign investment
- b) Increasing the liquidity
- c) Encouraging both public and private savings
- d) Anti-inflationary stance

Directions for the following 2 (two) items :

The following table gives the GDP growth rate and Tele-density data of different States of a country in a particular year. Study the table and answer the two items that follow.

States	Per Capita income (\$)	GDP growth	Tele-density
State 1	704	9.52	70.27
State 2	419	5.31	35.88
State 3	254	10.83	50.07
State 4	545	9.78	5.94
State 5	891	10.8	76.12
State 6	1077	11.69	77.5
State 7	900	8.88	104.86
State 8	395	5.92	6
State 9	720	7.76	82.25
State 10	893	9.55	96.7
State 11	363	4.7	57.7
State 12	966	7.85	63.8
State 13	495	9.37	52.3
State 14	864	5.46	97.9
State 15	497	7.48	62.3
State 16	777	7.03	93.8
State 17	335	5.8	49.9
State 18	599	7.49	47.84

74. With reference to the above table, which of the following is/are the most logical and rational inference/inferences that can be made?

1. Higher per capita income is generally associated with higher Tele-density.
2. Higher GDP growth rate always ensures higher per capita income.
3. Higher GDP growth rate does not necessarily ensure higher Tele-density.

Select the correct answer using the code given below.

- | | |
|------------|------------|
| a) 1 only | b) 2 and 3 |
| c) 1 and 3 | d) 3 only |

75. With reference to the above table, the following assumptions have been made:

1. Nowadays, prosperity of an already high performing State cannot be sustained without making further large investments in its telecom infrastructure.
2. Nowadays, a very high Tele-density is the most essential condition for promoting the business and economic growth in a State.

Which of the above assumptions is/are valid?

- | | |
|-----------------|--------------------|
| a) 1 only | b) 2 only |
| c) Both 1 and 2 | d) Neither 1 nor 2 |

78. What is the most rational and crucial message given by the passage?
- Mass production of meat through industrial farming is cheap and is suitable for providing protein nutrition to poor countries.
 - Meat-producing industry violates the laws against cruelty to animals.
 - Mass production of meat through industrial farming is undesirable and should be stopped immediately.
 - Environmental cost of meat production is unsustainable when it is produced through industrial farming.

PASSAGE-2

A male tiger was removed from Pench Tiger Reserve and was relocated in Panna National Park. Later, this tiger trekked toward his home 250 miles away. The trek of this solitary tiger highlights a crisis. Many wildlife reserves exist as islands of fragile habitat in a vast sea of humanity, yet tigers can range over a hundred miles, seeking prey, mates and territory. Nearly a third of India's tigers live outside tiger reserves, a situation that is dangerous for both human and animal. Prey and tigers can only disperse if there are recognized corridors of land between protected areas to allow unmolested passage.

79. Which of the following is the most rational and crucial message given by the passage?
- The conflict between man and wildlife cannot be resolved, no matter what efforts we make.
 - Safe wildlife corridors between protected areas is an essential aspect of conservation efforts.
 - India needs to declare more protected areas and set up more tiger reserves.
 - India's National Parks and Tiger Reserves need to be professionally managed.
80. With reference to the above passage, the following assumptions have been made:
- The strategy of conservation of wildlife by relocating them from one protected area to another is not often successful.
 - India does not have suitable legislation to save the tigers, and its conservation efforts have failed which forced the tigers to live outside protected areas.
- Which of the above assumptions is/are valid?
- 1 only
 - 2 only
 - Both 1 and 2
 - Neither 1 nor 2